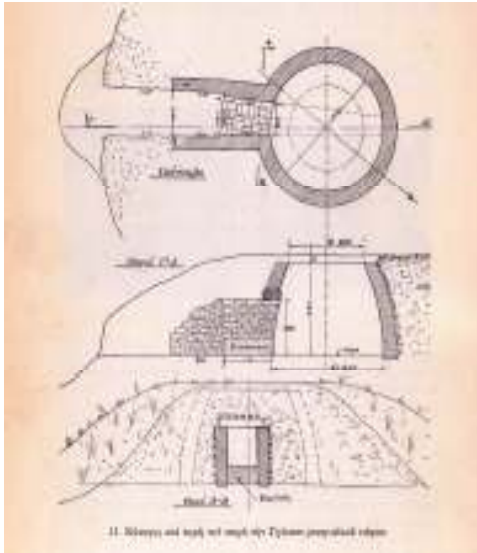


MYCENAEAN THOLOS TOMB A

The orifice begins with a width of 1.20 long and ends 1.02 m long at the entrance of the tholos.

The lintel at the entrance of the tholos has not been preserved in its location but we know that it was made up of two large slabs



The tholos is circular with a diameter of 4.06 m and existing height of 3.10 m.

It is also built by thin slabs. The initial height of the dome has been estimated to be 4.50 m long.

The floor of the dome is lower than the floor of the road (dromos) by 0,20m.

Right beside the public road Pteleos - Saint Theodore at kilometer point 4 from high school

Grammatikeio Pteleos, in (hill) 'Gritsa' Pteleos Magnesia Greese location,

excavated in 1950 by archaeologist

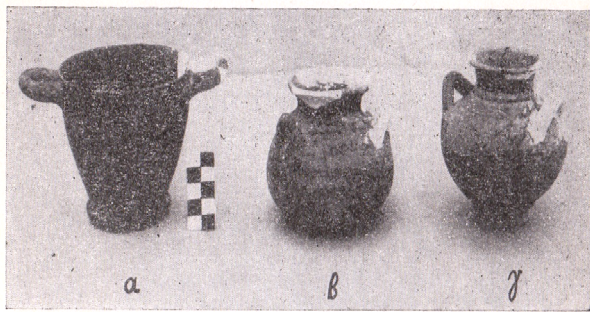
Nicholas M. Verdelis the

expense of the

Archaeological Society of Athens vaulted (tholos) Mycenaean tomb.

The tholos tomb A is the best preserved. The road (dromos) of the tomb is directed from west to east and it is 2.90 m long.





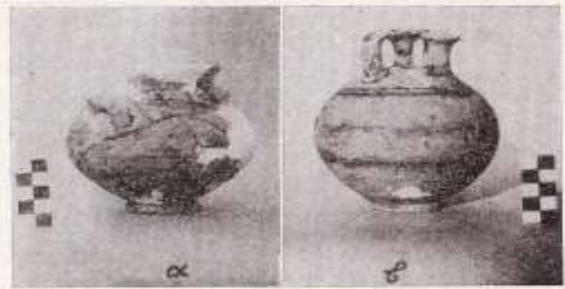
Εικ. 13. Ἀγγεία ἐκ τοῦ τάφου.



Εικ. 14. Ἀγγεία ἐκ τοῦ τάφου.



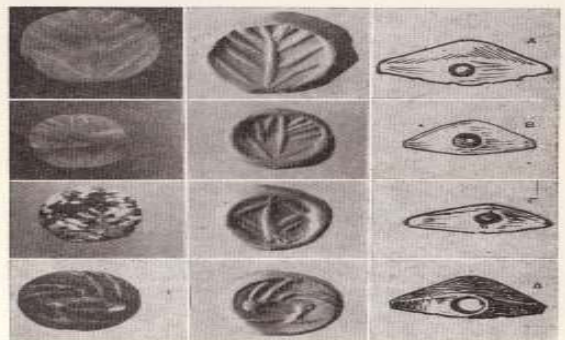
Εικ. 15. Ἀγγεία ἐκ τοῦ τάφου.



Εικ. 16. Ἀγγεία ἐκ τοῦ τάφου.



Εικ. 18. Χρυσά φύλλα ἐκ τοῦ τάφου.



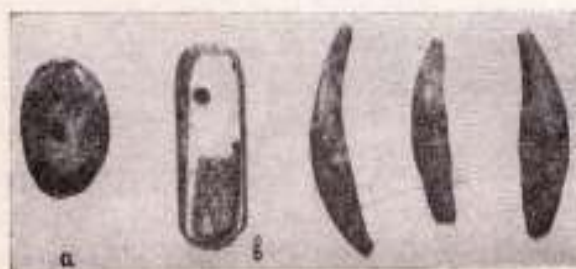
Εικ. 17. Σφραγίδες ἐκ τοῦ τάφου.



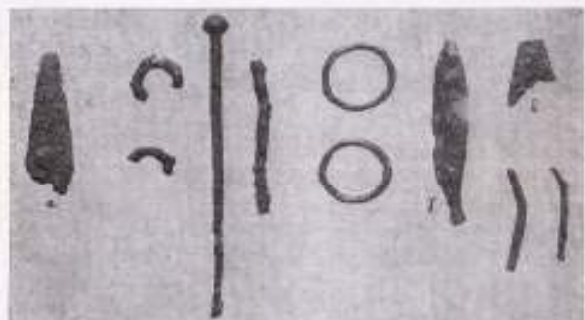
Εικ. 19. Φυγίδες ἐκ χρυσισυρῆς.



Εικ. 20. Λόβη καὶ ἑπτὰ ἄλλαι χρυσῆς κομμάτια.



Εικ. 21. Λοιπὰ κοσμήματα ἐκ τοῦ τάφου.



Εικ. 22. Χάλκινα ἀντικείμενα ἐκ τοῦ τάφου.